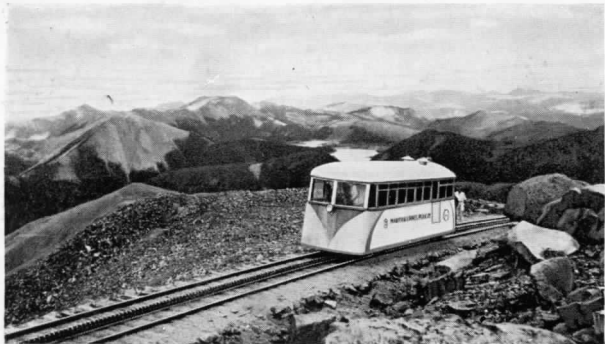


STREAMLINE CAR REPLACING OLD COG TRAIN ON THE COG RAILROAD,  
(MANITOU AND PIKES PEAK RAILWAY)



TO THE SUMMIT OF PIKES PEAK, ALT. 14,110 FT., PIKES PEAK REGION, COLO.

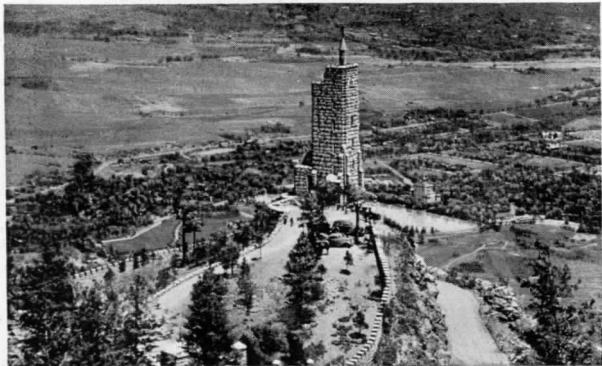


PIKES PEAK SHOWING AUTO HIGHWAY STARTING FROM CASCADE

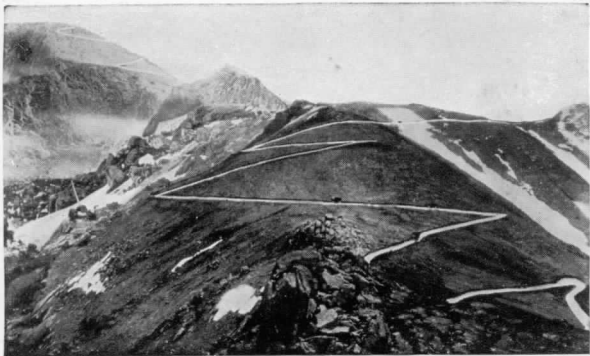


SUMMIT HOUSE OF THE COG ROAD, TOP OF PIKES PEAK, ALTITUDE 14,109 FEET

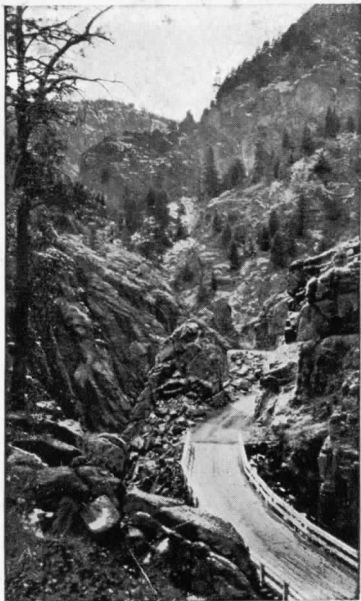
WILL ROGERS SHRINE OF THE SUN, ON CHEYENNE MOUNTAIN,



BROADMOOR-CHEYENNE HIGHWAY



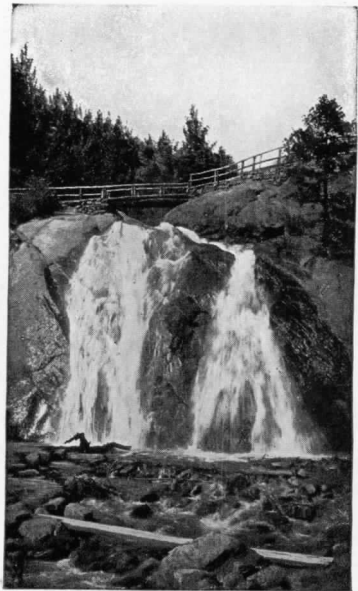
THE SWITCHBACKS—PIKES PEAK AUTO HIGHWAY



IN THE HEART OF PHANTOM CAÑON



SEVEN FALLS—SOUTH CHEYENNE CAÑON



HELEN HUNT FALLS, NORTH CHEYENNE CAÑON