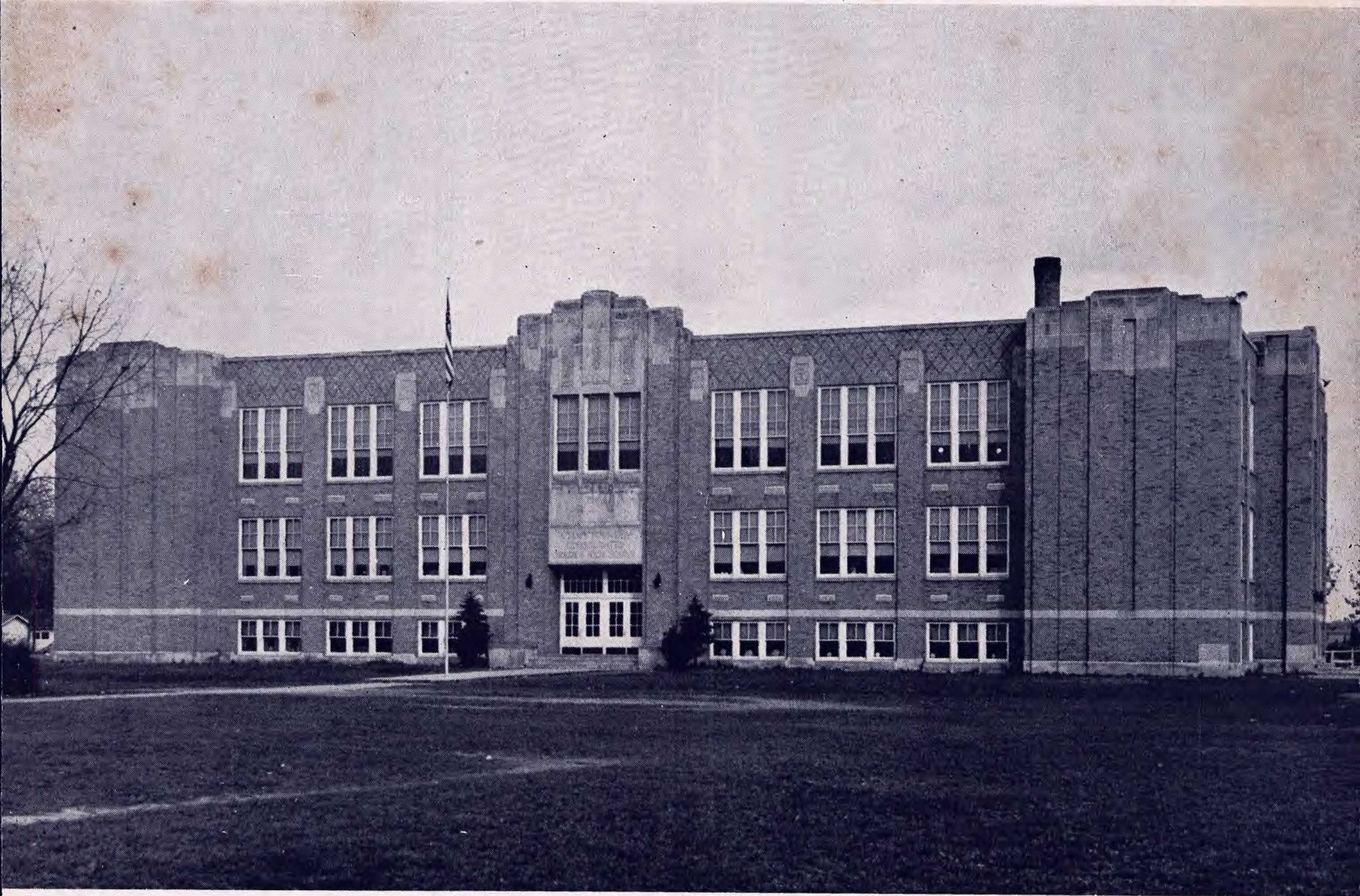


STUDIO ONE ...



This is our school, Sheridan High School, the building which rose from the ashes of a fire one quarter of a century ago.

From the year 1928 until 1931 it was necessary that classes be held in rooms up town. This practice was very inconvenient, but it was the only solution.

In 1931 the last brick of our new building was laid. Teachers and students moved gratefully into the building.

It seemed quite large at that time. "Plenty of room," they said. A large gym which seated 2000 people, facilities for home economic, agriculture, science, and commerce were welcome additions.

Who would have thought that in such a brief span of time this hall of learning would be so inadequate?

One year ago, through the untiring efforts of the PTA and others, a beautiful new wing was completed. This addition houses a much needed cafeteria, grade rooms, and music and art rooms.

We are indeed proud of you, Sheridan High School. Whatever faults you may have; however crowded you may be; you are still OUR school and we love you dearly.

MR. JEAN MACE, TRUSTEE

We are extremely fortunate in having Mr. Mace as our trustee. He is a good friend of the school and as such is interested in all of our school problems and activities.



"Here truth must triumph, honor must prevail."