



CHAS. EMERSON

Emerson AND Thomas

420 - 21 - 22
Wysor Block

BOTH PHONES
1344

GENERAL INSURANCE

Real Estate
AND
Rentals

00

We will Write Your
Bond and
Insure Anything
Except
Your Character



J. G. THOMAS

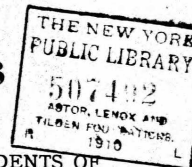
EMERSON'S MUNCIE DIRECTORY

(ILLUSTRATED)

1907-1908

BEING

A COMPLETE INDEX TO THE RESIDENTS OF
THE CITY. ALSO A CLASSIFIED



BUSINESS DIRECTORY

TO WHICH IS ADDED

AN APPENDIX CONTAINING USEFUL INFORMATION OF
CITY, COUNTY, STATE AND MISCEL-
LANEOUS MATTERS

TOGETHER WITH A

STREET DIRECTORY

AND

GAZETTEER of DELAWARE COUNTY

COMPILED AND PUBLISHED BY

CHARLES EMERSON

PRICE, \$5.00



PRESS OF
CENTRAL PRINTING COMPANY
MUNCIE, INDIANA



DR. W. D. WHITNEY
Supt. of the Muncie Hospital.

Trained nurses in attendance.
Rectal and Chronic Diseases given special attention.
Electricity and Vibratory Treatments.
Hospital located at 515 South Council Street, Muncie, Ind. Avondale car line. Cars stop at Hospital. Both Phones No. 34.

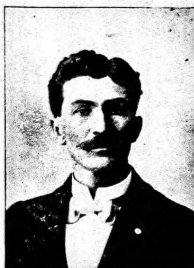
THE Muncie Hospital

Owned and Conducted by the
Drs. W. D. & E. A. Whitney
Established in 1891.

Patients received at any time.

The best surgical skill furnished.

All patrons given the personal attention of the physicians in charge.



F. E. HAMILTON

BREEDER AND SHIPPER OF

Duroc Jersey Hogs

Farm, 3 Miles Northwest
of Muncie.

Correspondence Solicited.

All Stock Recorded in American Association.

RURAL ROUTE No. 1
BELL PHONE 1075-2

MUNCIE, IND.



MUNCIE HOSPITAL
(See Advertisement Opposite Page)

POPULATION OF MUNCIE

As Taken by the Publisher of This Work

White males	16,828
White females	15,857
Total whites	32,685
Colored males	710
Colored females	641
Total colored	1,351
Grand total	34,036

These figures are not from an estimate made by multiplying the names in the Directory, but the result of a careful enumeration from house to house canvass.

TROW JUNE 14 10 3.15cts

General Index

Abbreviations	157
Banks	1208
Business Directory	841
Churches	1198
City Government	1192
County Government	1194
Directory of Albany	927
Directory of Cowan	947
Directory of Daleville	950
Directory of De Soto	964
Directory of Eaton	966
Directory of Gaston	988
Directory of Oakville	998
Directory of Phillips	1000
Directory of Royerton	1000
Directory of Selma	1002
Directory of Shideler	1009
Directory of Stockport	1011
Directory of Wheeling	1011
Directory of Yorktown	1013
Gazetteer	927
General Directory of Names	157
Labor Organizations	1206
Land Owners and R F D Patrons	1027
Population of Muncie	80
Schools	1196
Societies	1199
State Officers	1195
Street Directory	85

94-156

STREET DIRECTORY.

WHEELING AVE—	900 Hackley	H	300 Gilbert	I
Or pike, continuation	1000 Ebright	H	WOLF, S—	
of High north from the	1100 Beacon	H	From Ohio ave s to	
river	W 1200 Grant	H	Willard.	
WHITELY—	1300 Penn	H	500 Ohio ave	I
All north of river	1400 Blaine	I	600 Seymour	I
and e of Ft W C & L	1500 Meridian	I	700 Kirby ave	I
R R; principal street,	1600 Lincoln	I		
Broadway street, paral-	1700 Macedonia ave	I	WYSOR—	
lel lettered A B C, etc.,	WILLARD, W—		From 500 n Walnut	
to the east, streets run-	From 1100 s Walnut		e to Plum.	
ning e and w, com-	w to Mound.		200 Mulberry	W
mencing at the river	200 High	C	300 Jefferson	W
number 1, 2, 3, etc., to	300 Franklin	C	400 Elm	W
the north	W 400 Liberty	C	500 Madison	W
WILLARD, E—	600 Council	A	600 Monroe	W
From 1100 s Walnut	WINDSOR—		700 Vine	W
e to limits.	1 e Macedonia ave			
200 Mulberry	C from Ohio ave n to		WYSOR HEIGHTS—	
300 Jefferson	C Dudley short st.	I	Bounded on the south	
400 Elm	C		by White River, e by	
500 Madison	H WOLF, N—		Ft W C & L R R,	
600 Monroe	H From 1400 e Main n		north by Centennial	
700 Vine	H to limits.		pike, west by Granville	
800 Plum	H 200 Washington	I	pike.	



For First Class Bargains in
Carriages and Buggies, Call on **Fred Klopfer**
Rubber Tires a Specialty 300-302 E. Jackson St. Bell Phone 1333
AB 157 AB

EMERSON'S MUNCIE DIRECTORY

1907-1908

ABBREVIATIONS

agtagent	mkrmaker	rdroad
alalley	mnfg .manufacturer	retretail
bdsboards	mnfr ..manufacturer	RevReverend
betbetween	N CNormal City	ssouth
bkprbookkeeper	nnorth	s esouth east
bldgbuilding	n enorth east	s ssouth side
clkclerk	nrnear	s wsouth west
com mer	n snorth side	secysecretary
commission merchant	n wnorth west	supt ..superintendent
condrconductor	oppopposite	treastreasurer
corcorner	plplace	wwest
deptdeputy	P Opost office	w swest side
eeast	prespresident	wholwholesale
e seast side	prinprincipal	widwidow
hhouse	proprproprietor	wksworks
lablaborer	pubpublisher	*colored

Where numbers appear before the second street in the location of place of business or residence it has reference to the number of doors from the corner. Thus: s s Adams, 2 w Walnut, means south side Adams, 2 doors west of Walnut.

A

ABBOTT ARTHUR B (Anna L), Auditor, Gen Freight and Passenger Agt, C I & E Ry Co, office n w cor Main and Jefferson, h 314 e North
Abbott George D (Winnie), motorman I U T CO, h 105 Wheeling Ave, Riverside
Abbott Miss Jessie, h 105 Wheeling Ave, Riverside
Abbott Joshua (Myrtle), wks Kirby-Wood Lumber Co, h 1427 w 9th

Plumbing, Heating, Chandeliers

402-404 East Main St. **JERRY A. GALLIVAN**

507492

The Indiana Pipe Company PHONES
New 1157 Old 268
For "OLD LEE" ARTHRACITE

GU 388 GU

Guffigan Michael (Emma J C), engineer L E & W yards, rms 502 s High
Guffigan William J, fireman Station No 1, h 800 e 1st
Guild Mrs Dora, h318 n Calvert, N C
Guile Miss Pearl, h 2102 s Elm
Guinea John, supt The Norton Oil Co, h 203 e 7th
Guinnup C Lon (Maude A), wks Ball Bros, h 1106 e Wil-
lard
Guinnup (see also Gwinnup)
Guinns Ermus (Nancy E), gardener, h w s Mock, s of 12th
Gullett Hamilton G, h 528 s Elliott
Gullett Harry C (Catherine), purchasing agt Kitselman Bros, h 314 e Seymour
Gullett Pierce G (Esther), h 528 s Elliott
Gundlach Anna E, h 1112 e 5th
Gundlach Bertha, h 1112 e 5th
Gundlach Miss Gertrude, clk D & M Telephone office, h 1112 e 5th
Gundlach Herman, wks Ball Bros, h 1112 e 5th
Gunyon Charles A, lab, h 1640 w 6th, Forest Park
Gunyon Mrs Elizabeth A, wid of Daniel, h 1640 w 6th Forest Park
Guston Miss Blanch E, wks E Rosenthal, h DeSoto, Ind
Guston Oscar, wks Ball Bros
Guthrie Ambrose (Mary S), farmer, h s s e Jackson, 6 e Molar ave, Boyceeton
Guthrie Charles M (Minnie), wks Glascock Bros Mfg Co, h 671 s Berlin
Guthrie Clyde, upholsterer Fred C Ritter, h 1425 Kirby ave
Guthrie David M (Maude E), wks Ball Bros, h 1425 e Kirby ave
Guthrie Earl C (Ethel E), wks Ball Bros, h 517 e Ohio ave
*Guthrie Finley (Luzzell), (Guthrie Bros), h 430 Kirby ave
*Guthrie Garfield, saloonist, h 816 s Vine
Guthrie Geo H (Mary), supt and engniner Muncie Auto Parts Co, h 511 s Gharkey
Guthrie Geo E (Bulah V), wks Ball Bros, h 615 s Blaine
GUTHRIE HARRY E (Ina C), Gen Mgr Muncie Morning Star, h McKillip Flats, Howard nr Gharkey

IF YOU WANT FURNITURE CALL ON
R. MEEKS & SONS
115-117 EAST MAIN STREET

WAGTELLS Stoves, Hardware
AND
Cooking Utensils

GU 389 HA

GUTHRIE J AUGUSTUS (Carrie), Asst Cashier The Peoples National Bank, h 110 s Vine
GUTHRIE JAMES R (Martha), dealer in Staple and Fancy Groceries, Country Produce etc, 101 s High, h Flat 1st A, Arcade (see adv bottom lines)
GUTHRIE HON LEONIDAS A (Ethel I), Attorney at Law and Mayor of Muncie, suite 201-202 Wysor blk, h 426 w Howard
Guthrie Rev Thomas S, minister, h 1337 e Jackson
*Guthrie Wm (Grace), saloon, h 1015 e Jackson
Guy Adaline, wid of Thomas, h 612 s Elm
Guy F Lee, machinist Muncie Auto Parts Co, h 612 s Elm
Guy William (Belle), wks Glascock Bros Mfg Co, h 1516 w 6th
Guysor Mrs Mabel, h 606 e 5th
Gwinnup Miss Alpha, h 125½ w Adams
GWINNUP CHAS (Violetta), Prop The Delaware Bar and Cafe, Choice Wines, Liquors and Cigars, 210 s Walnut, also Treas Daniel Boone Gas and Oil Co, h 125½ w Adams
Gwinnup Miss Lettie, h 125½ w Adams
Gwinnup (see also Guinnup)

H

Haas Frank, wks Hemingray Glass Co
Haas John, wks Hemingray Glass Co
Hackett Miss Anna J, wks Republic Iron & Steel Co, h 911 s Grant
Hackett Geo S (Ella), contractor, h 1530 w 10th
Hackett Henry, clk S H Knox & Co, h 911 s Grant
Hackett James M (Mary), teamster Muncie Lumber Co, h 911 s Grant
Hackett John, driver Schlitz Brewing Co, rms 910 s Elm
Hackett Leo, clk S H Knox & Co, h 911 s Grant
Hackett Miss Mary, cashier and bookkeeper Sam Ringold, h 911 s Grant
Hading (———), iron worker Midland, h 3220 s Monroe

C.B.Fudge & CLOTHIERS
401-403 S. WALNUT ST FURNISHERS.